

Welcome to your allotment – Don't worry it's not as scary as it seems!

Friends – easiest plants to grow



potatoes



chard



leeks



squash



beetroot



onions



strawberries



raspberries



beans (broad, runner & French)



Trickier plants to grow



tomatoes



sweetcorn



peas



parsnips



carrots



asparagus



brassicas

cabbage

kale

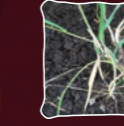


broccoli



cauliflower

Uninvited guests... watch out!



couch grass



bindweed



nettles



brambles



dandelions

Tip: Make sure to dig out all the roots when clearing these 'pernicious perennials' as any piece of root can re-grow into another whole plant!

What your plants need to survive

Water

Newly-sown seeds need regular watering or they won't grow. Remember to water during dry spells.

Weather

Some plants are very sensitive to cold, so learn when you can safely plant them out. Protect your plants against winds if you can.

Fertile Soil

Soil needs to be 'topped up' to stay fertile and grow healthy plants. Try well-rotted horse manure, organic chicken pellets or make your own compost.

Protection/nurturing

Regular weeding means plants have less competition. Pests like slugs & snails can ruin your crops – keep an eye out for them after it rains.

How to approach a new allotment

Little & often – going regularly and doing a little bit of work is better than a big clear-out once a month, as weeds will grow back quicker than you think.

Bite-size chunks – You don't have to clear the whole plot right away. As you clear each small area, plant something there to stay motivated.

Grow what you like to eat!

Keep trying – all growers fail sometimes, so don't be afraid to just give it another go.

Ask for help – other ploholders love to share their knowledge so don't be afraid to ask.



Tips and hints

Try mulching (covering beds with cardboard and woodchip) or growing 'green manures' (eg phacelia). Green manures cover the soil, suppress weed growth and when you 'dig them in' they add nutrients into the soil.

BHAF recommends organic methods so you don't unintentionally damage wildlife or neighbouring plots. There are a wide range of organic products on offer, including organic slug pellets and fertilisers.



Visit our website at www.bhaf.org.uk and sign up for our newsletter



Who's who on Brighton & Hove Allotments

The Brighton and Hove Allotment Federation (BHAF)

- Volunteer organisation run by plot holders to protect and promote the rights of all plot holders in Brighton & Hove. All plot holders are automatically a member of BHAF.
- Supports and oversees the work of the Site Reps and local Allotment Associations and administers a development fund for the improvement of allotment sites. Liaises with and represents plot holders interests to Brighton and Hove City Council.
- Holds 3 Allotment Forum meetings a year as well as an AGM, all of which you are invited to attend.

Contact on bhaf.contact@gmail.com

Brighton and Hove City Council

- Manages the waiting list, issues tenancy agreements, collects the rent, issues weed notices and manages the infrastructure of the sites.

Contact on allotments@brighton-hove.gov.uk or call 01273 292929

Allotment Associations

- Local groups run by volunteers covering one or sometimes two neighbouring sites.

- Have meetings every few months to discuss issues on their sites and in some cases to manage their local shops. Associations often sell cheap seeds and compost on site.
- Association Committees are elected each year at an AGM. They also elect their Site Reps. Please join your local Association. If there isn't one, consider forming one!

Site Representatives

- Volunteers who represent the interests of their site and its plot holders.
- Site Reps show tenants around the site, help them choose a suitable plot size, they let the plots and help with inspections.
- Your Site Rep is your first point of contact in regards to most issues affecting you.

- Site Reps liaise between plot holders and the Allotment Officer and also play an active role within the Brighton & Hove Allotment Federation.

Your Site Rep's contact details can be found on the BHAF website.

Please go to the BHAF website and sign up for the email newsletter to stay informed about local issues, events, meetings and offers.
www.bhaf.org.uk

Month	Our top tips				
January	Dream about summer	Clear out shed			
February	Warm soil by covering with plastic	Buy seed potatoes & 'chit' them	Visit Seedy Sunday www.seedysunday.org		
March	Plant potatoes - earlies (St Patrick's Day)	Sow broad beans	Plant strawberries	Clear beds of weeds, prepare allotment for inspections	Go to BHAF AGM
April	Plant potatoes - mains	Sow leeks in a seed bed	Sow leaf beet	Sow green manure	Weeding & watering
May	Sow beetroot	Sow kale (protect with nets)	Sow radishes	Make a liquid comfrey feed from comfrey & nettle leaves	Weeding & watering
June	Sow carrots (avoid root fly)	Sow runner beans	Sow dwarf beans	Sow courgettes & pumpkins	Weeding & watering
July	Sow more beetroot	Sow more carrots	Spread leeks out in a bed	Sow lettuce	Weeding & watering
August	Watering	Harvesting	Weeding	BBQ with friends	
September	Sow winter spinach	Sow green manure for overwintering	Order seeds for next year	Pick apples	
October	Plant onion & garlic bulbs	Apply manure to tops of beds	Apply a mulch	Plant raspberry canes	Pay the rent
November	Pruning fruit trees	Tidying boundaries	Cutting trees & hedges	Burn diseased plants	
December	Plan for next year				

This plan assumes you don't have a greenhouse or polytunnel for raising young plants. If you do you can get a head start on some of these timings - just don't forget to 'harden off' your plants before putting them outside. If you're not familiar with any of the terms in this calendar, you should be able to find more information online. Or just ask your neighbours for help!

This monthly planner is for absolute beginners. For tips & monthly ideas for more advanced growers: www.bhaf.org.uk/category/advice

Your Allotment Welcome Pack

Helpful tips and advice for allotment beginners - For further information visit www.bhaf.org.uk



Brighton & Hove City Council